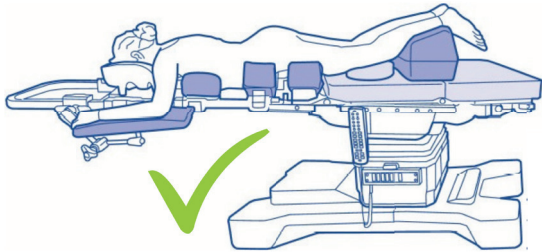


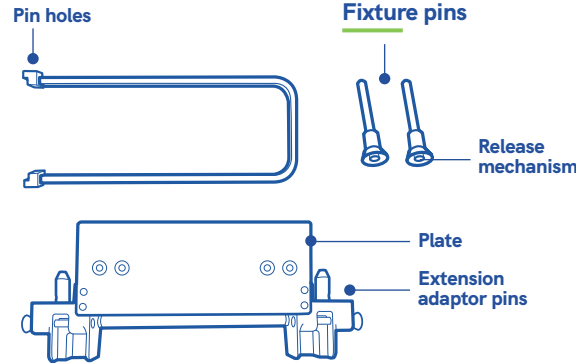


Fit the CS Carbon Spine Extension to the Merivaara Grand Promerix Operating Table to achieve imaging and patient positioning capabilities comparable to that of a specialist dual-rail spine table.



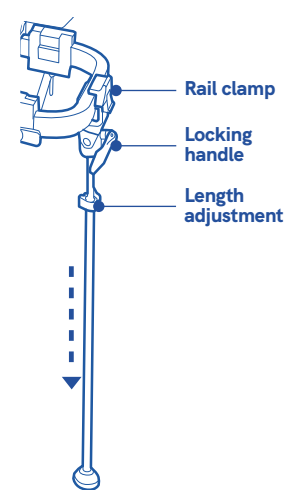
CSM-2930 CS Carbon Spine Extension- Merivaara
Contains: CSM-2742, CSM-2730 & CSM-2737

CSM-2730 CS Carbon Spine Extension Frame



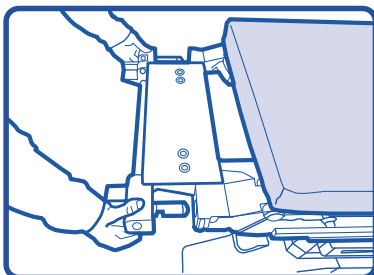
CSM-2742 CS Carbon Spine Extension Adaptor - Merivaara

CSM-2737 CS Carbon Spine Extension Leg

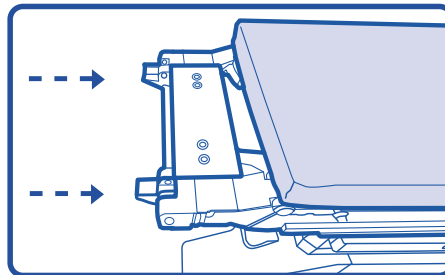


Only to be used by trained clinicians. Recommended to be attached to the HEAD END of the operating table only for FULL WEIGHT BEARING CAPACITY. Only to be used with the operating table in the NEUTRAL position. Do not exceed the safe working load of 250kg on the HEAD END.

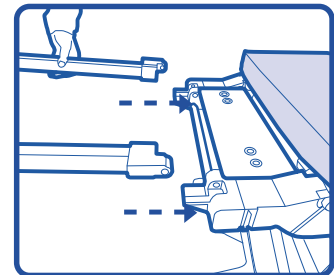
WARNING: If attachment at the FOOT END is required the SWL is REDUCED to 180kg and MUST be used with the stabilizing leg.



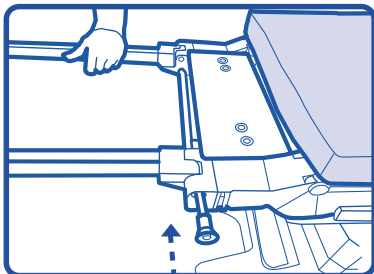
1 Line up the pins of the extension adaptor with the operating table.



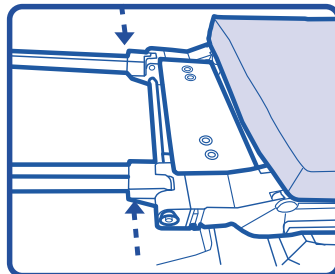
2 Insert the extension adapter into the operating table until the adapter locks into place. Ensure the extension adapter is flush against the operating table.



3 Supporting the full weight of the frame, line the pin holes of the extension rails up with the holes of the extension adapter.



4 Insert the fixture pin- taking care to press the release mechanism in the centre of the pin in- through the extension adaptor and extension rail to secure the extension.



5 Repeat on opposite side and ensure both sides are secured. Release the weight of the frame into position.

Cleaning Instructions:



Clean using standard hospital wipes



Do not immerse in water



Do not autoclave



UK: Care Surgical Ltd
Unit 6 Ringtail Road
Burscough, L40 8JY
Tel: 01704 336671

USA: Care Surgical LLC
43 Broad Street
Suite B106, Hudson,
MA 01749, USA
Tel: 866-243-4107



Medical Device



UK Conformity Assessed



Reuse



CE Mark



Latex Free



Non Sterile



SWL



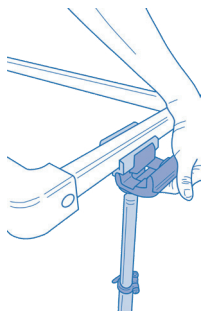
LOT:



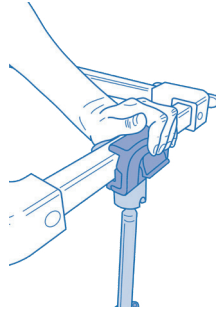


To adjust the leg:

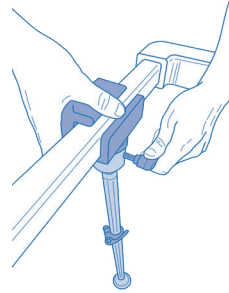
Intended use: The CS Carbon Spine Extension Leg is intended to be used to support and stabilise the CS Carbon Spine Extension Frame during the procedure.



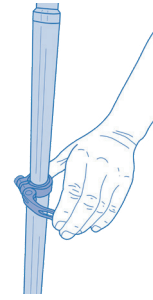
1 Place the leg in the centre of the head end of the CS Carbon Extension Frame.



2 Ensure that the clip is closed and the leg is firmly attached to the frame.



3 Ensure the locking handle is locked and secured by tightening clockwise.

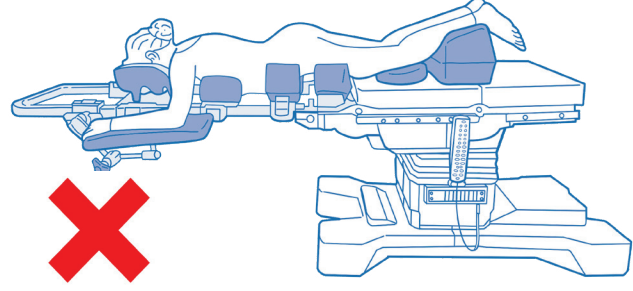
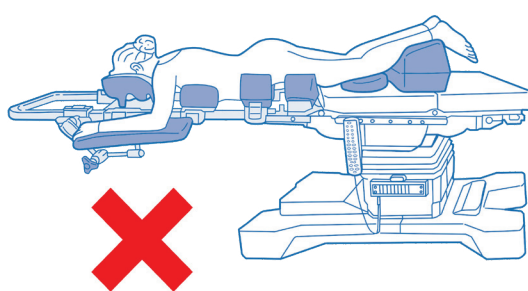
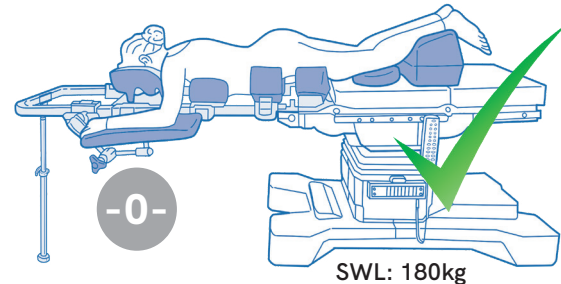
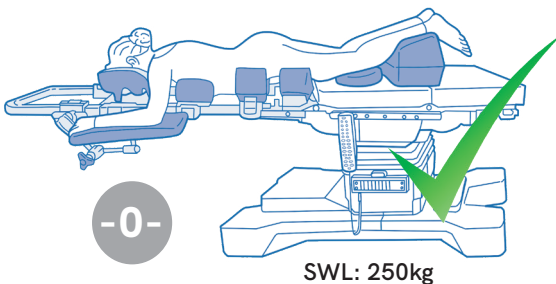


4 If the operating table needs to be raised, raise using the table hand control and then loosen the black lever on the rod to set the new height before tightening the black lever again.

WARNING: If the table needs to be lowered, first raise the table to remove any pressure on the leg. Then make sure that the black lever (fig. 4) is released before lowering the table. Once in the final position, tighten the black lever again.

WARNING: Do NOT remove the leg whilst the patient is in position without first raising the table to release any tension or weight on the leg. When the support leg has any load bearing, the lever (fig. 4) must not be released to prevent the patient from making a sudden downward movement. The only time the leg doesn't need to be engaged is when you want to maneuver the operating table.

As soon as the patient is in the correct position, re-engage the leg with the floor and ensure both the locking handle and length adjustment lever are locked.



UK: Care Surgical Ltd
Unit 6 Ringtail Road
Burscough, L40 8JY
Tel: 01704 336671

USA: Care Surgical LLC
43 Broad Street
Suite B106, Hudson,
MA 01749, USA
Tel: 866-243-4107



Medical Device



UK Conformity Assessed



Reuse



CE Mark



Latex Free



Non Sterile



SWL



5 060624 129308