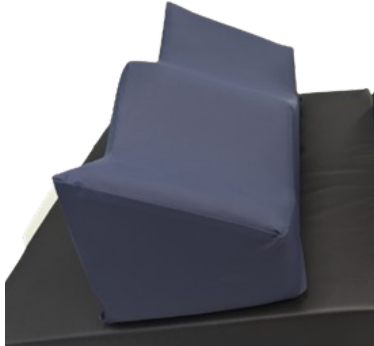




Technical Data Sheet

CSM3020 CS Easy Shin Support™



Description

- Reusable
- Supports the patient's shins in the prone position and allows their ankles/feet to find their own position
- Reduces the incidence of pressure-related injury to the shins

Application Area

- OR
- Anaesthesia

Measurements

- Length: 500mm/19.69"
- Width 220mm/8.66"
- Height: 240mm/9.45"

Material Composition

- Polyurethane foam core
- PU Cover
- Latex & phthalate free

Cleaning

- Clean with standard hospital wipes

Order Information

Product Code	Product Name	Qty
CSM3020	CS Easy Shin Support™	1 Unit

Packaging Information

- Each unit is packaged in a recyclable polyethylene bag
- 1 unit is packaged into a cardboard box for sale

Storage Instructions

- First in first out
- Store in a cool dry place
- Avoid direct sunlight
- Do not store anything heavy on top
- Avoid storing where sharp objects could pierce the skin of the product

Contraindications

Incorrect positioning of the patient on this product can cause:

- Pressure marking or ulcers
- Neurological damage, which can lead to temporary or permanent paralysis
- Venous pressure, which can lead to ischaemia
- Examine the product for damage before and after each use. If the skin is pierced or torn, it cannot be cleaned effectively and should be replaced.
- Do not immerse in water
- Do not autoclave
- Only to be used by trained medical personnel

Further Information

- Disposable/Reusable: Reusable
- Sterility: N
- CE/FDA/UKCA:Y
- MD Class: 1
- UDI-DI/GTIN No: 5060624125966

Labelling



Manufacturer

UK: Care Surgical Ltd
Unit 6 Ringtail Road
Burscough, L40 8JY
United Kingdom
Tel: +44 1704 336671

US: Care Surgical LLC
43 Broad Street
Suite B106, Hudson
MA 01749, USA
Tel: +1-866-243-4107



Medical Device



Reuse



Latex Free



Non Sterile



UK Conformity Assessed



CE Mark

www.care-surgical.com



Care Surgical Supplies Ltd, Office 2, 12a Lower Main Street, Lucan Co. Dublin, K78 X5P8 Ireland

Australian Sponsor:

MDSS AU Pty Ltd, Ground Floor, Suite 55,
97-99 Bathurst Street, Sydney, NSW 2000, Australia

Ref: CSM3020 - TDS (Rev.04) 03/2026