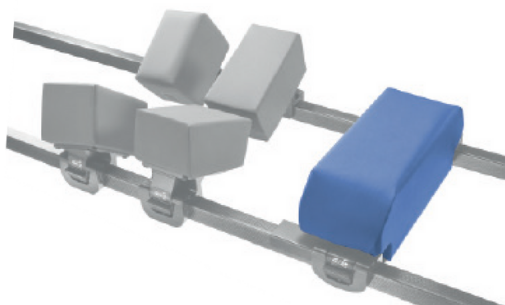




# Technical Data Sheet

## CSM-2725 CS Jackson Style Chest Support



### Description

- Supports the patient's chest in the prone position
- Attach to the CS Spine Frame, other suitable modular operating frame or dual-rail spinal table to support the patient's chest whilst in the prone position
- Use the incorporated clips to attach the support to the table
- Open the clip to slide the chest support laterally into the required position
- Close the clip securely to ensure the support does not move during the procedure
- Number of uses: Unrestricted, subject to damage (see damage indicators in the Contraindications column)
- Compatible with dual rail spine tables with rail sizes that measure 1.25" (3.2cm) wide and 1.5" (3.8 cm) tall

### Application Area

- OR
- Anaesthesia

### Measurements

- Length 430mm/16.93"
- Width 155mm/6.10"
- Height 150mm/5.91"

### Material Composition

- Wipeable skin covering
- Polyurethane foam core
- Transfer coated PU with anti-bacterial treatment on knitted polyester

### Cleaning

- Clean with standard hospital wipes

### Order Information

Product Code	Product Name	Qty
CSM-2725	CS Jackson Style Chest Support	1 Unit

### Packaging Information

- Each unit is packaged in a recyclable polyethylene bag
- 1 unit is packaged into a cardboard box for sale

### Storage Instructions

- First in first out
- Store in a cool dry place
- Avoid direct sunlight
- Do not store anything heavy on top
- Avoid storing where sharp objects could pierce the skin of the product

### Contraindications

Incorrect positioning of the patient on this product can cause:

- Pressure marking or ulcers
- Neurological damage, which can cause paraplegia
- Venous pressure, which can lead to ischaemia

Examine the pad for damage before and after each use. If the skin is pierced or torn, it cannot be cleaned effectively and should be replaced.

- Do not immerse in water
- Do not autoclave
- Only to be used by trained medical personnel
- If the clips are not fully closed, the support could move during the procedure which could cause injury to the patient or clinician

### Further Information

- Disposable/Reusable: Reusable
- Sterility: N
- CE/FDA/TGA/UKCA: Y
- MD Class: 1
- Basic UDI/GTIN No: 5060624122200

### Labelling



Manufacturer

UK: Care Surgical Ltd  
Unit 6 Ringtail Road  
Burscough, L40 8JY  
United Kingdom  
Tel: +44 1704 336671

US: Care Surgical LLC  
Marlborough  
MA 01752  
United States  
Tel: +1-866-243-4107

[www.care-surgical.com](http://www.care-surgical.com)



Care Surgical Supplies Ltd, Office 2, 12a Lower Main Street, Lucan Co. Dublin, K78 X5P8 Ireland



Medical Device



Reuse



Latex Free



Non Sterile



UK Conformity Assessed



CE Mark

Rev.02 04/03/2024