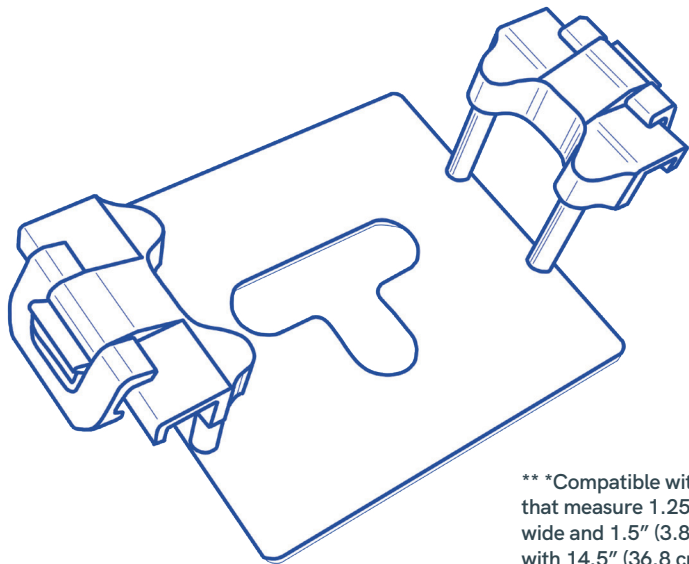




CARE SURGICAL

CS Head Tray attachment - Lowered



***Compatible with rail sizes that measure 1.25" (3.2cm) wide and 1.5" (3.8 cm) tall with 14.5" (36.8 cm) space between. Allen® is the registered trademark of Allen Medical Systems Inc.

CS Head Tray Attachment - Lowered is compatible with all Allen and Jackson Style dual-rail operating tables.**

Head tray attachment for use with the CS Prone Face Block, CS Prone Head Support System or CS Prone Plus Head Support System

*Only to be used by trained clinicians



Manufacturer

UK: Care Surgical Ltd
Unit 6 Ringtail Road
Burscough, L40 8JY
Tel: 01704 336671

USA: Care Surgical LLC
43 Broad Street
Suite B106, Hudson,
MA 01749, USA
Tel: 866-243-4107

www.care-surgical.com

Care Surgical Supplies Limited, Office 2, 12a Lower Main Street,
Lucan Co. Dublin, K78 X5P8 Ireland



Medical Device



UK Conformity
Assessed



Reuse



CE Mark



Latex Free



Non Sterile



LOT Number:



EC REP

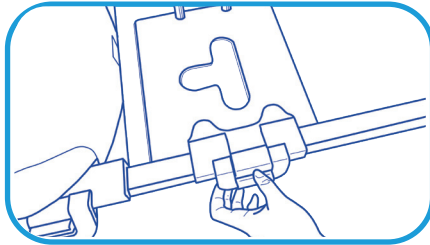
Product Code: CSM-2751

Rev.3 09 /23

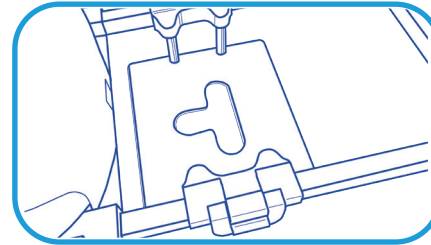


CARE SURGICAL

CS Head Tray attachment - Lowered



- 1 Place the attachment on the frame so that the brackets are over the bars.



- 2 Snap the locking clip shut to secure the attachment in position.

Cleaning instructions



Clean using standard
hospital wipes



Do not immerse in water



Do not autoclave



Manufacturer

UK: Care Surgical Ltd
Unit 6 Ringtail Road
Burscough, L40 8JY
Tel: 01704 336671

USA: Care Surgical LLC
43 Broad Street
Suite B106, Hudson,
MA 01749, USA
Tel: 866-243-4107



Medical Device



UK Conformity
Assessed



Reuse



CE Mark



Latex Free



Non Sterile



5 060624 127519

www.care-surgical.com

Care Surgical Supplies Limited, Office 2, 12a Lower Main Street,
Lucan Co. Dublin, K78 X5P8 Ireland

Product Code: CSM-2751

Rev.3 09 /23

EC REP