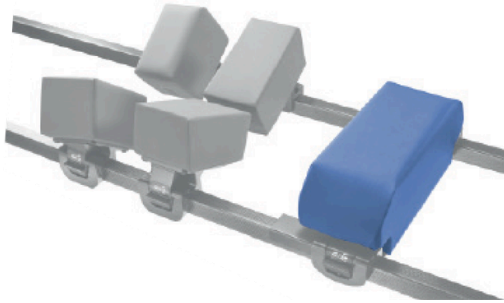




# Technical Data Sheet

## CSM2725 CS Jackson Style Chest Support



### Description

- Supports the patient's chest in the prone position
- Attach to the CS Spine Frame, other suitable modular operating frame or dual-rail spinal table to support the patient's chest whilst in the prone position
- Use the incorporated clips to attach the support to the table
- Open the clip to slide the chest support laterally into the required position
- Close the clip securely to ensure the support does not move during the procedure
- Number of uses: Unrestricted, subject to damage (see damage indicators in the Contraindications column)
- Compatible with dual rail spine tables with rail sizes that measure 1.25" (3.2cm) wide and 1.5" (3.8 cm) tall

### Application Area

- OR
- Anaesthesia

### Measurements

- Length: 430mm/16.93"
- Width: 155mm/6.10"
- Height: 150mm/5.91"

### Material Composition

- Wipeable skin covering
- Polyurethane foam core
- Acetal Plastic
- Transfer coated PU with anti-bacterial treatment on knitted polyester

### Cleaning

- Clean with standard hospital wipes

### Order Information

Product Code	Product Name	Qty
CSM2725	CS Jackson Style Chest Support	1 Unit

### Packaging Information

- Each unit is packaged in a recyclable polyethene bag
- 1 unit is packaged into a cardboard box for sale

### Storage Instructions

- First in first out
- Store in a cool dry place
- Avoid direct sunlight
- Do not store anything heavy on top
- Avoid storing where sharp objects could pierce the skin of the product

### Contraindications

Incorrect positioning of the patient on this product can cause:

- Pressure marking or ulcers
- Neurological damage, which can cause paraplegia
- Venous pressure, which can lead to ischaemia

Examine the pad for damage before and after each use. If the skin is pierced or torn, it cannot be cleaned effectively and should be replaced.

- Do not immerse in water
- Do not autoclave
- Only to be used by trained medical personnel
- If the clips are not fully closed, the support could move during the procedure which could cause injury to the patient or clinician

### Further Information

- Disposable/Reusable: Reusable
- Sterility: N
- CE/FDA/TGA/UKCA: Y
- MD Class: 1
- UDI-DI/GTIN: 5060624122200

### Labelling



Manufacturer

UK: Care Surgical Ltd  
Unit 6 Ringtail Road  
Burscough, L40 8JY  
United Kingdom  
Tel: +44 1704 336671

US: Care Surgical LLC  
43 Broad Street  
Suite B106, Hudson  
MA 01749, USA  
Tel: +1-866-243-4107



Medical Device



Reuse



Latex Free



Non Sterile



UK Conformity Assessed



CE Mark

[www.care-surgical.com](http://www.care-surgical.com)



Care Surgical Supplies Ltd, Office 2, 12a Lower Main Street, Lucan Co. Dublin, K78 X5P8 Ireland

Australian Sponsor:

MDSS AU Pty Ltd, Ground Floor, Suite 55,  
97-99 Bathurst Street, Sydney, NSW 2000, Australia