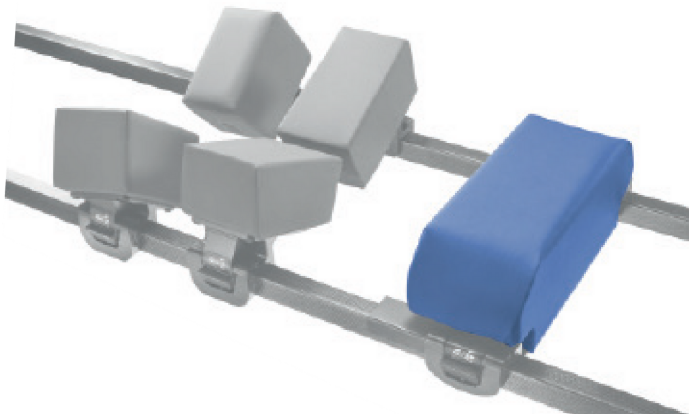




CARE SURGICAL
Specialists in Patient Positioning

CS Jackson Style Chest Support

Chest support made from polyurethane foam with a wipeable skin covering.



- + Supports the patient's chest in the prone position
- + Quick-release locking clips
- + Velcro-free supports
- + Reusable, wipe clean support

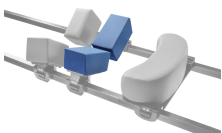
Use with:



CS Jackson Style Chest Support

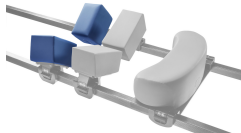
Code: CSM-2725
Qty: 1 Unit

Related Products:



CS Hip Supports (Pair)

Code: CSM-2717
Qty: 1 Pair
Also available in small and large



CS Thigh Supports (Pair)

Code: CSM-2718
Qty: 1 Pair



CS Jackson Comfort Covers - 5 Piece

Code: CSM-2602
Qty: 6 Sets

CS Prone Patient Supports

Code: CSM-2716
Qty: 1 Set

Contact us for more information:
www.care-surgical.com | info@care-surgical.com