



CARE SURGICAL
Specialists in Patient Positioning

CS Supine Bariatric Support

A 2-piece wedge cushion set to elevate the head and thorax in the supine position, reducing pressure and facilitating intubation.

- + Helps to easily reach the optimal intubation position by raising the head, upper body and shoulders above the chest ("ramped position")
- + Can also be ordered separately
- + Fully sealed for a better cleaning
- + Fully Radiolucent
- + Maximum Weight: 250kg



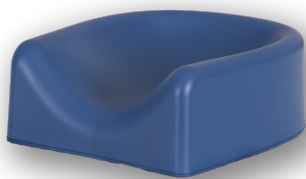
CS Supine Bariatric Support

Code: CSM-2648 CS Supine Bariatric Support (Set)
(Includes Top & Base) Qty: 1

Code: CSM-2914 CS Supine Bariatric Support - Top Qty: 1

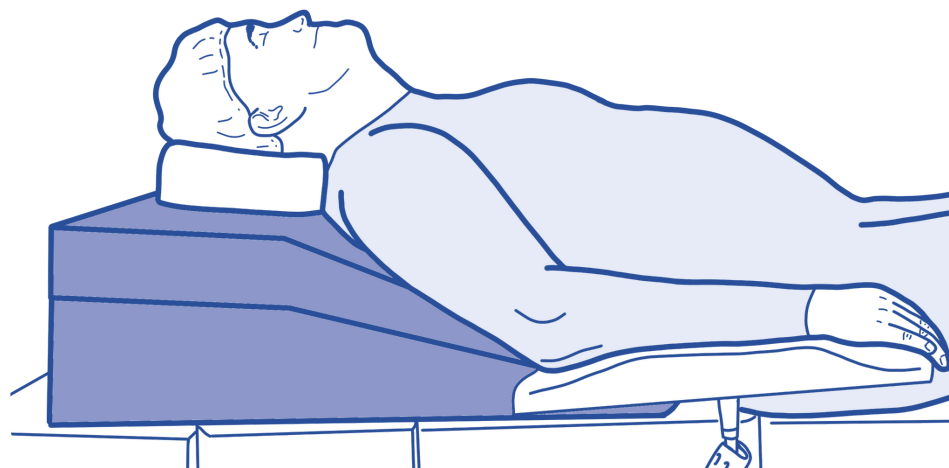
Code: CSM-2915 CS Supine Bariatric Support - Base Qty: 1

Our recommended addition:



CS Supine & Lateral Head Support

Code: CSM-2643
Qty: 1 Unit



Contact us for more information:
www.care-surgical.com | info@care-surgical.com