



CARE SURGICAL
Specialists in Patient Positioning

NEW

CS Universal Arm Support-Extended

Reusable extended articulating armboard designed to enable safe and comfortable patient support in a wide range of positions.



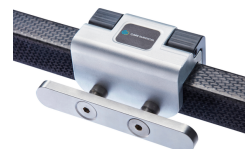
- + Moulded design for improved comfort
- + Spherical joints for smooth rotation
- + 3 rotating joints support full range of positioning
- + Single central clamping handle for easy and secure single-hand adjustment
- + Extended for enhanced positioning range

CS Universal Arm Support- Extended

Code: CSM-2649

Qty: 1 Unit

Use with:



CS Table Rail Adapter - EU

Code: CSM-2739-1

Qty: 1 Unit

*Also available for UK/US rails

Related Products:



CS Universal Arm Support - Moulded

Code: CSM-2647

Qty: 1 Unit



CS Universal Arm Support

Code: CSM-2646

Qty: 1 Unit



Contact us for more information:
www.care-surgical.com | info@care-surgical.com