



**CARE SURGICAL**  
Specialists in Patient Positioning

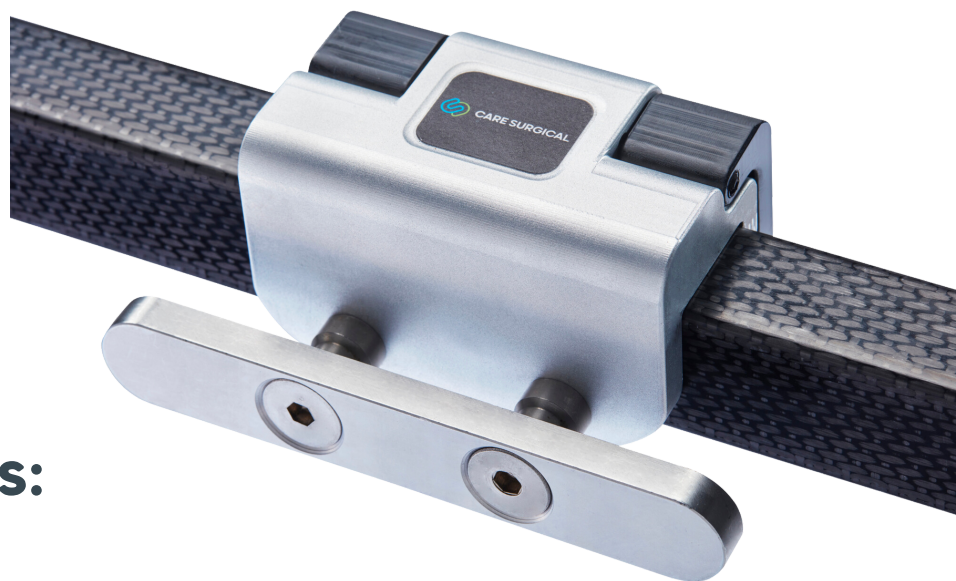
# CS Table Rail Adaptor - US

Adaptor suitable for use on standard dual rail tables\*

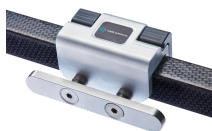
- + Easy to attach thanks to the intuitive design and quick-release clipping mechanism
- + Offers easy accessibility to attach additional accessories such as armboards, fixation straps, etc.
- + Max. patient weight: 250kg/ 550lb

## CS Table Rail Adaptor - US

Code: CSM-2739-3  
Qty: 1 Unit

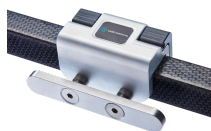


## Related Products:



**CS Table Rail Adaptor - EU**

Code: CSM-2739-1  
Qty: 1 Unit



**CS Table Rail Adaptor - UK**

Code: CSM 2739-2  
Qty: 1 Unit

\*Compatible with rail sizes that measure 1.25" (3.2cm) wide and 1.5" (3.8 cm) tall with 14.5" (36.8cm) space between.



**Contact us for more information:**  
[www.care-surgical.com](http://www.care-surgical.com) | [info@care-surgical.com](mailto:info@care-surgical.com)