



CARE SURGICAL
Specialists in Patient Positioning

CS Table Rail Adaptor - EU

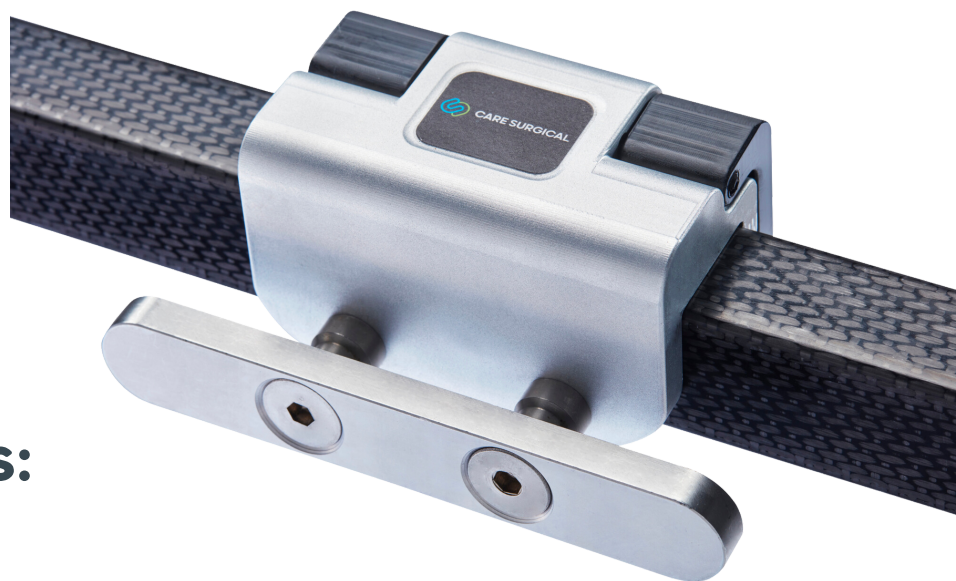
Adaptor suitable for use on standard dual rail tables.

- + Easy to attach thanks to the intuitive design and quick-release clipping mechanism
- + Offers easy accessibility to attach additional accessories such as armboards, fixation straps, etc.
- + Max. patient weight: 250kg (550lbs)

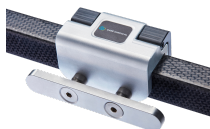
CS Table Rail Adaptor - EU

Code: CSM-2739-1

Qty: 1 Unit

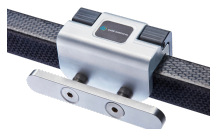


Related Products:



CS Table Rail Adaptor - US

Code: CSM-2739-3
Qty: 1 Unit



CS Table Rail Adaptor - UK

Code: CSM 2739-2
Qty: 1 Unit

*Compatible with rail sizes that measure 1.25" (3.2cm) wide and 1.5" (3.8 cm) tall with 14.5" (36.8cm) space between.



Contact us for more information:
www.care-surgical.com | info@care-surgical.com