



CARE SURGICAL
Specialists in Patient Positioning

NEW

CS Universal Arm Support- Moulded

Reusable articulating armboard designed to enable safe and comfortable patient support in the prone, supine and lateral positions.

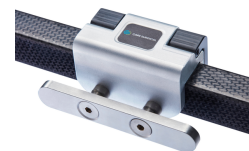


- + One-step set up
- + Moulded design for improved comfort
- + 3 rotating joints support full range of positioning
- + Single central clamping handle for easy and secure single-hand adjustment
- + Spherical joints for smooth rotation

CS Universal Arm Support- Moulded

Code: CSM-2647
Qty: 1 Unit

Use with:



CS Table Rail Adapter - EU

Code: CSM-2739-1
Qty: 1 Unit
Available for UK/US rails

Related Products:



CS Universal Arm Support - Extended

Code: CSM-2649
Qty: 1 Unit



CS Universal Arm Support

Code: CSM-2646
Qty: 1 Unit



Contact us for more information:
www.care-surgical.com | info@care-surgical.com