



## CS Memory Foam Sheet- 200cm x 55cm x 5cm

The disposable 5cm memory foam sheet provides extra padding for the patient on the operating table or in the recovery room. Use the complete sheet to cover the whole operating table or tear for smaller pieces to fit the patient's arms, legs and chest.

- + The undulating structure of the foam enables air to circulate to assist in maintaining the patient's temperature
- + Reduces and distributes pressure to reduce the risk of pressure ulcers
- + Can be easily cut or torn to size



### Related Products:

### CS Memory Foam Sheet- 200cm x 55cm x 5cm

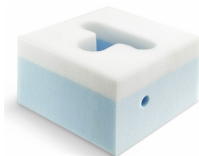
Code: CSM-2588  
Qty: 1 Unit



**CS ProneOne Head Support**

Code: CSM-2520  
Qty: 8 Units

\*Also Available in Small (CSM-2519)



**CS Prone Face Block 7"**

Code: CSM-2536V  
Qty: 10 Units

\*Also Available in 5" (CSM-2551V)



**CS Prone Chest and Pelvic Rolls**

Code: CSM-2902  
Qty: 2 Sets



**CS Standard Arm Cushions**

Code: CSM-2575  
Qty: 10 Pairs



**CS Adjustable Prone Leg Cushion**

Code: CSM-2590  
Qty: 2 Sets



**Contact us for more information:**  
[www.care-surgical.com](http://www.care-surgical.com) | [info@care-surgical.com](mailto:info@care-surgical.com)