



CS Traction Boot Foam Insert

Disposable foam insert for use with compatible traction boot.



CS Traction Boot Foam Insert

Code: CSM-2666
Qty: 6 Units

- + Cushioned insert compatible with the Allen Traction Boot
- + Single use to aid infection control- dispose of after use with regular clinical waste
- + Reduces the incidence of pressure related injury whilst the patient's foot and lower leg are supported in the the Allen Traction Boot

Related Products:



CS Prone Chest and Pelvic Rolls

Code: CSM-2902
Qty: 2 Units



CS Adjustable Prone Leg Cushion

Code: CSM-2590
Qty: 2 Sets



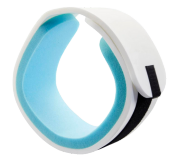
CS ProneOne Head Support

Code: CSM-2520
Qty: 8 Units



CS Disposable Head Strap

Code: CSM-2667
Qty: 10 Units



CS Disposable Leg Holder

Code: CSM-2738
Qty: 12 Units

Allen® is the registered trademark of Allen Medical Systems Inc.



Contact us for more information:
www.care-surgical.com | info@care-surgical.com