



**CARE SURGICAL**  
Specialists in Patient Positioning

**NEW**

# CS Universal Arm Support

Reusable articulating armboard designed to enable safe and comfortable patient support in the prone, supine and lateral positions.

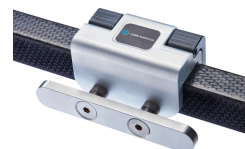


- + One-step set up
- + Curved design for improved comfort
- + 3 rotating joints support full range of positioning
- + Single central clamping handle for easy and secure single-hand adjustment
- + Spherical joints for smooth rotation

## CS Universal Arm Support

Code: CSM-2646  
Qty: 1

## Use with:



## CS Table Rail Adapter - EU

Code: CSM-2739-1  
Qty: 1 Unit  
Available for UK/US rails

## Related Products:



### CS Universal Arm Support - Extended

Code: CSM-2649  
Qty: 1 Unit



### CS Universal Arm Support - Moulded

Code: CSM-2647  
Qty: 1 Unit



**Contact us for more information:**  
[www.care-surgical.com](http://www.care-surgical.com) | [info@care-surgical.com](mailto:info@care-surgical.com)