



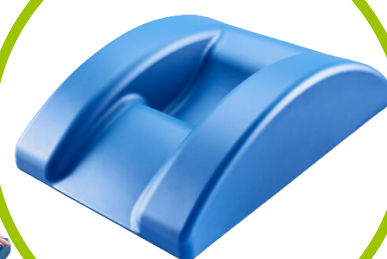
CARE SURGICAL
Specialists in Patient Positioning

The CS Tony Prone

The CS Tony Prone is a reusable table top support that enables safe and comfortable positioning of the conscious and unconscious patient in the prone position.



- + Chronic Pain Management
- + Patient position suitable for a range of procedures and specialties
- + Recess width x height: 200mm x 110mm
- + Recessed design allows improved abdominal excursion and comfortable positioning



CS Tony Prone

Code: CSM-2906

Qty: 1

Related Products



CS Shin Supports (Pair)

Code: CSM-2820
Qty: 1



CS Knee Rings (Pair)

Code: CSM-2821
Qty: 1



CS ProneOne Head Support

Code: CSM-2520
Qty: 8



CS Prone Plus Head Support System

Code: CSM-2565
Qty: 1



CS Universal Arm support - Moulded

Code: CSM-2647
Qty: 1



Contact us for more information:
www.care-surgical.com | info@care-surgical.com