

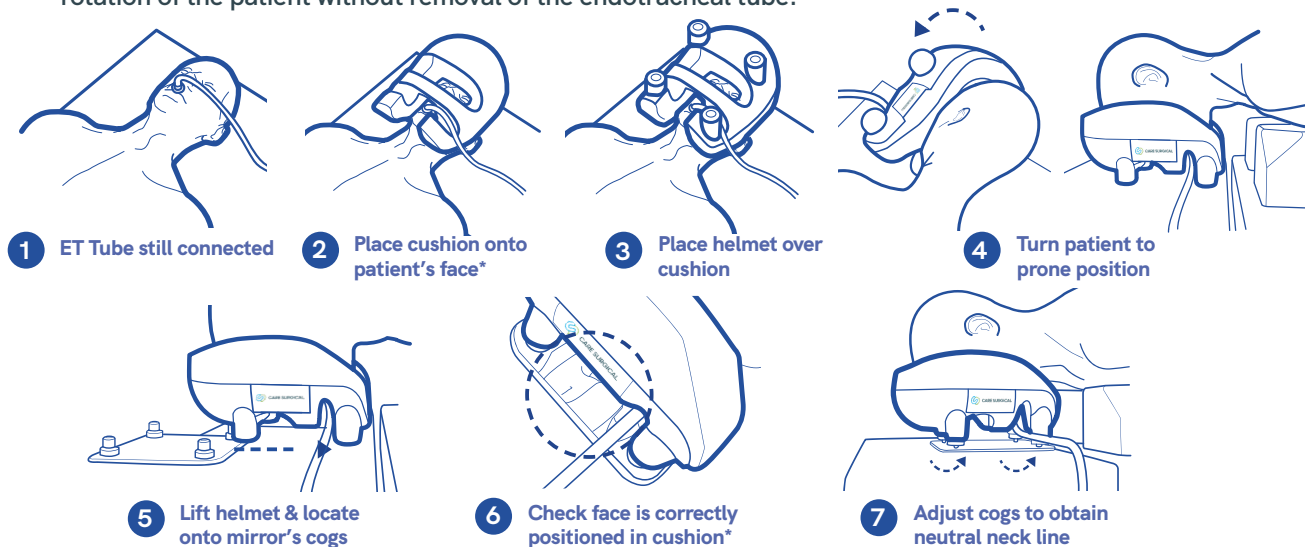


CARE SURGICAL

CS Prone Head Support System (Helmet & Mirror)

*Suitable for patients 8 years+. To only be used with the CS Prone Face Cushion CSM-2510

The CS Prone Head Support System used with the CS Prone Face Cushion removes pressure from the chin without compromising support to the forehead and cheeks, facilitates a neutral neckline and allows for rotation of the patient without removal of the endotracheal tube.



Only to be used by trained clinicians *See overleaf for guidance on correct positioning. **Warning: Do not remove cogs from mirror.**

UK: Care Surgical Ltd
Unit 6 Ringtail Road
Burscough, L40 8JY
Tel: 01704 336671

USA: Care Surgical LLC
43 Broad Street
Suite B106, Hudson,
MA 01749, USA
Tel: 866-243-4107

www.care-surgical.com

Care Surgical Supplies Limited, Office 2, 12a Lower Main Street, Lucan Co. Dublin, K78 X5P8 Ireland



Manufacturer



Medical Device



UK Conformity Assessed



Reuse



CE Mark



Latex Free



Non Sterile



5 060624 120114

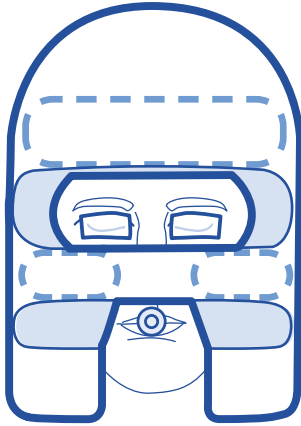


LOT Number:

Product Code: CSM-2560 Rev 5 01/24

EC REP

The Forehead & Cheeks



See the instructional video
at www.care-surgical.com

Possible problems

- + Pressure ulcers
- + Facial edema

Possible causes

- + Inadequate blood supply due to prolonged excessive pressure
- + Shear, affecting the blood flow to the forehead or cheeks
- + Friction injury due to a period of continuous movement
- + Patient incorrectly positioned in the face support
- + High risk patient (includes the elderly, diabetics, smokers and those taking certain medications, eg steroids)

Reduce the risk

- + Ensure the patient's face is supported on the bony part of their cheeks, not the soft tissue
- + Ensure the patient's eyebrows are clearly visible
- + The face support must not encroach into the periorbital area above or below the eye
- + Recheck the head support after turning the patient and at least every 30 minutes throughout the procedure
- + It may be necessary to lift and replace the patient's face during long procedures or if there has been movement



Manufacturer

UK: Care Surgical Ltd
Unit 6 Ringtail Road
Burscough, L40 8JY
Tel: 01704 336671

USA: Care Surgical LLC
43 Broad Street
Suite B106, Hudson,
MA 01749, USA
Tel: 866-243-4107

www.care-surgical.com

Care Surgical Supplies Limited, Office 2, 12a Lower Main
Street, Lucan Co. Dublin, K78 X5P8 Ireland



Medical Device



UK Conformity
Assessed



Reuse



CE Mark



Latex Free



Non Sterile



5 060624 120114



Product Code: CSM-2560 Rev 5 01/24