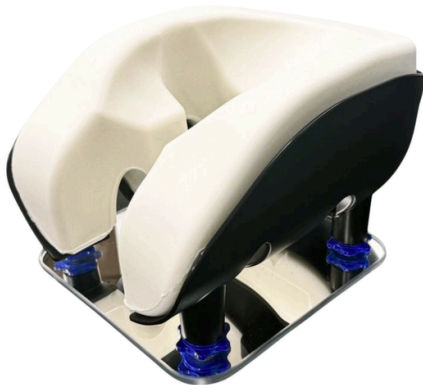




# Technical Data Sheet

## CSM2560 CS Prone Head Support System™



### Description

- Reusable
- Helmet holds the CS Prone Face Cushion (CSM2510) to maintain their integrity throughout prone procedures
- Space for safe positioning of ET tubes
- The helmet can be used with or without the mirror
- The mirror enables the clinician to monitor the patient's eyes and tubing during the procedure
- The cogs fitted to the mirror are used to adjust the height or angle of the helmet to achieve the safest natural neutral neckline

### Application Area

- OR
- Anaesthesia
- ICU

### Measurements

#### Helmet:

- Length: 317mm/12.48"
- Width: 233mm/9.17"
- Height: 171mm/6.73"

#### Mirror:

- Length: 220mm/8.6"
- Width: 220 mm/8.6"
- Height: 4mm/0.16"

### Material Composition

- Helmet made from ABS Plastic
- Acrylic mirror, which incorporates 4 adjustable cogs
- Aluminium 6061

### Order Information

| Product Code | Product Name                  | Qty      |
|--------------|-------------------------------|----------|
| CSM2560      | CS Prone Head Support System™ | 1 System |

### Cleaning

- Clean with standard hospital wipes

### Packaging Information

- Each set is packaged in a recyclable polyethylene bag
- Each set is packaged into a cardboard box for sale

### Storage Instructions

- First in first out
- Store in a cool dry place
- Avoid direct sunlight
- Do not store anything heavy on top

### Contraindications

Incorrect positioning of the patient on this product can cause:

- POVL
- pressure ulcers
- neurological damage
- venous pressure, which can lead to ischaemia
  
- Do not use if there is any damage on the helmet or mirror
- Do not autoclave
- Only to be used by trained medical personnel

### Further Information

- Disposable/Reusable: Reusable
- Not fully radiolucent- cog screws may be visible on x-rays
- Sterility: N
- CE/FDA/TGA/UKCA: Y
- MD Class: 1
- UDI-DI/GTIN 5060624120114

### Labelling



Manufacturer

UK: Care Surgical Ltd  
Unit 6 Ringtail Road  
Burscough, L40 8JY  
United Kingdom  
Tel: +44 1704 336671

US: Care Surgical LLC  
43 Broad Street  
Suite B106, Hudson,  
MA 01749, USA  
Tel: 866-243-4107

[www.care-surgical.com](http://www.care-surgical.com)



Care Surgical Supplies Ltd, Office 2, 12a Lower Main Street, Lucan Co. Dublin, K78 X5P8 Ireland



Medical Device



Reuse



Latex Free



Non Sterile



UK Conformity Assessed



CE Mark

Ref: CSM2560- TDS (Rev.04) 03/2026