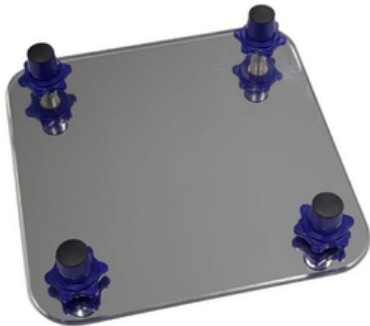




Technical Data Sheet

CSM2566 CS Adjustable Mirror



Description

- Mirror for use in the prone position
- The mirror enables the clinician to monitor the patient's eyes and tubing
- The cogs fitted to the mirror adjust the height or angle of the CS Prone Helmet to achieve the safest natural neutral neckline
- Number of uses: Unrestricted, subject to damage (see damage indicators in the Contraindications column)

Application Area

- OR
- Anaesthesia

Measurements

- Length 220mm/8.66"
- Width 220mm/8.66"
- Height 4mm/0.16"

Material Composition

- Made from Acrylic
- Latex & phthalate free
- Aluminium 6061

Cleaning

- Clean the mirror with non-alcohol wipes or warm soapy water

Order Information

Product Code	Product Name	Qty
CSM2566	CS Adjustable Mirror	1 Unit

Packaging Information

- Each unit is packaged in a recyclable polyethene bag
- 1 unit is packaged into a cardboard box for sale

Storage Instructions

- First in first out
- Store in a cool dry place
- Avoid direct sunlight
- Do not store anything heavy on top

Contraindications

Incorrect positioning of the patient on this product can cause:

- Pressure marking or ulcers
- POVL
- Neurological damage, which can cause paraplegia
- Venous pressure, which can lead to ischaemia
- Do not autoclave
- Only to be used by trained medical personnel

Further Information

- Disposable/Reusable: Reusable
- Not fully radiolucent- cog screws may be visible on x-rays
- Sterility: N
- CE/FDA/TGA/UKCA:Y
- MD Class: 1
- Basic UDI/GTIN No: 5060624120138

Labelling



Manufacturer

UK: Care Surgical Ltd
Unit 6 Ringtail Road
Burscough, L40 8JY
United Kingdom
Tel: +44 1704 336671

US: Care Surgical LLC
43 Broad Street
Suite B106, Hudson
MA 01749, USA
Tel: +1-866-243-4107

www.care-surgical.com



Care Surgical Supplies Ltd, Office 2, 12a Lower Main Street, Lucan Co. Dublin, K78 X5P8 Ireland



Medical Device



Reuse



Latex Free



Non Sterile



UK Conformity Assessed



CE Mark

Rev.03 05/03/2026