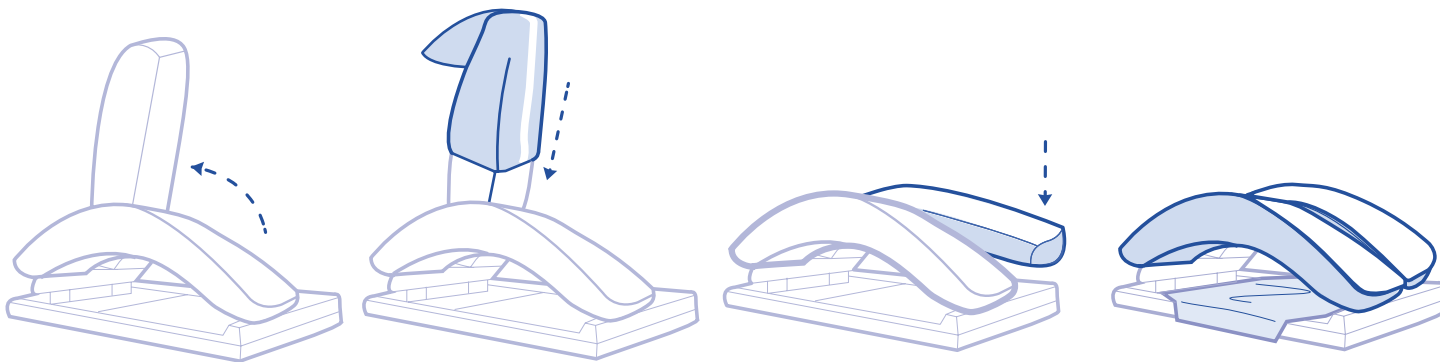




CARE SURGICAL

CS Bow & Wilson Comfort Covers - 30mm

Covers to protect the Wilson or Allen Bow® Frame from damage and to aid infection control



- 1** Raise the arch of the Frame and slide the cover onto it. Ensure the white band is on the underside of the arch so the patient does not come in contact with the seam.
- 2** Return the arch to its position and repeat with the other arch.
- 3** Use the square drape to protect the base of the frame. Slide the bar roll onto the centre bar of the frame if applicable.

Consult the instructions for the Wilson Frame for guidance on correct positioning of the patient.



Manufacturer

UK: Care Surgical Ltd
Unit 6 Ringtail Road
Burscough, L40 8JY
Tel: 01704 336671

USA: Care Surgical LLC
Marlborough
MA 01752
Tel: 866-243-4107

www.care-surgical.com

Care Surgical Supplies Limited, 69 Esker Woods Drive
Lucan, Co Dublin, K78PX45, Ireland



Do not reuse



CE Mark



Latex Free



Non Sterile



5 060624 121173

EC REP

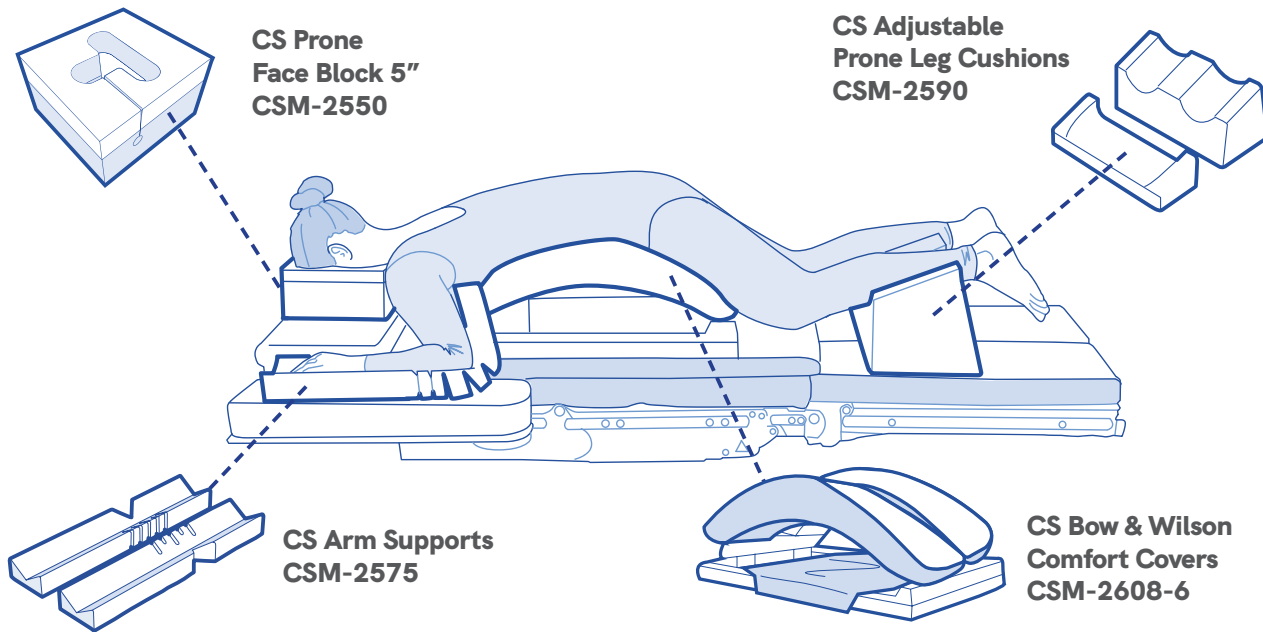
Australian Sponsor, Summit Surgical
PO Box 60, Landsborough
QLD 4550 Australia

LOT Number:

Product Code: CSM-2608-6

Rev 08 06/21

Compatible Products



To see the full range of Care Surgical Products, visit www.care-surgical.com



Manufacturer

UK: Care Surgical Ltd
Unit 6 Ringtail Road
Burscough, L40 8JY
Tel: 01704 336671

USA: Care Surgical LLC
Marlborough
MA 01752
Tel: 866-243-4107

www.care-surgical.com

Care Surgical Supplies Limited, 69 Esker Woods Drive
Lucan, Co Dublin, K78PX45, Ireland



Do not reuse



CE Mark



Latex Free



Non Sterile



5 060624 121173



Australian Sponsor, Summit Surgical
PO Box 60, Landsborough
QLD 4550 Australia

Product Code: CSM-2608-6 Rev 08 06/21

GTIN

- + 5060624121173

Description

- + Disposable Drape with waterproof lining and 30mm foam top

Intended use

- + Protective covers

Indications for Use

- + Single Use
- + For use on the Allen Bow or Wilson Frame
- + Helps to protect the Allen Bow or Wilson Frame from wear and tear
- + Aids infection control
- + 30mm foam top to reduce the risk of the patient experiencing marking or pressure ulcers
- + Latex and phthalate free
- + Instructions for use are packaged with the product

Warnings, Precautions, Contraindications & Adverse Effects

- + If incorrectly applied to the Frame, this product can cause pressure marks or ulcers on the patient

Packaging

- + Each Unit is packaged in a recyclable polyethene bag
- + 6 sets are packaged into a cardboard box for sale

Transport & Storage

- + Transport and store in dry conditions and out of direct light where possible
- + Exposure to light may cause yellowing of areas of the product. This is purely cosmetic and will not affect the quality or the safety of the product