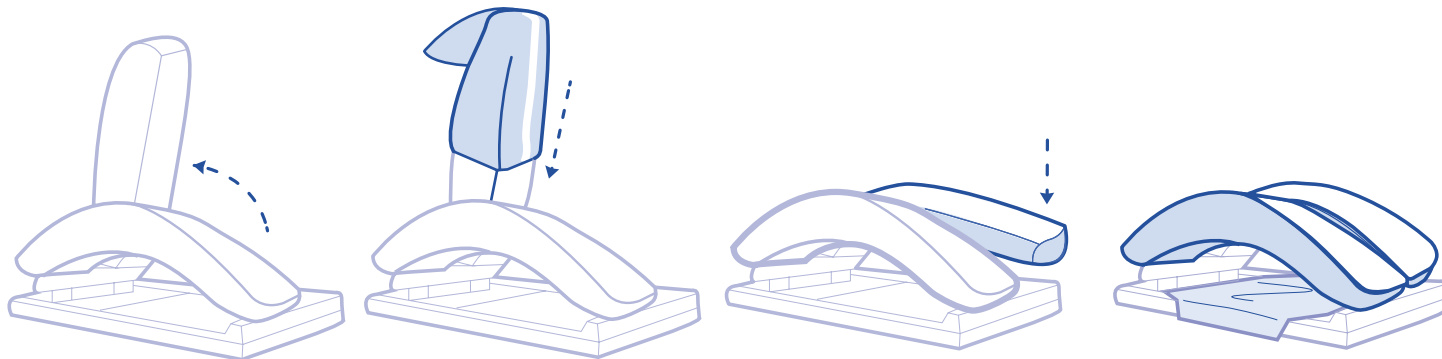




CARE SURGICAL

CS Bow & Wilson Standard Covers

Covers to protect the Wilson or Allen Bow® Frame from damage and to aid infection control



1 Raise the arch of the Frame and slide the cover onto it. Ensure the white band is on the underside of the arch so the patient does not come in contact with the seam.

2 Return the arch to its position and repeat with the other arch.

3 Use the square drape to protect the base of the frame. Slide the bar roll onto the centre bar of the frame if applicable.

Consult the instructions for the Wilson Frame for guidance on correct positioning of the patient.



Manufacturer

UK: Care Surgical Ltd
Unit 6 Ringtail Road
Burscough, L40 8JY
Tel: 01704 336671

USA: Care Surgical LLC
Marlborough
MA 01752
Tel: 866-243-4107

www.care-surgical.com

Care Surgical Supplies Limited, 69 Esker Woods Drive
Lucan, Co Dublin, K78PX45, Ireland



Do not reuse



CE Mark



Latex Free



Non Sterile



5 060624 120176

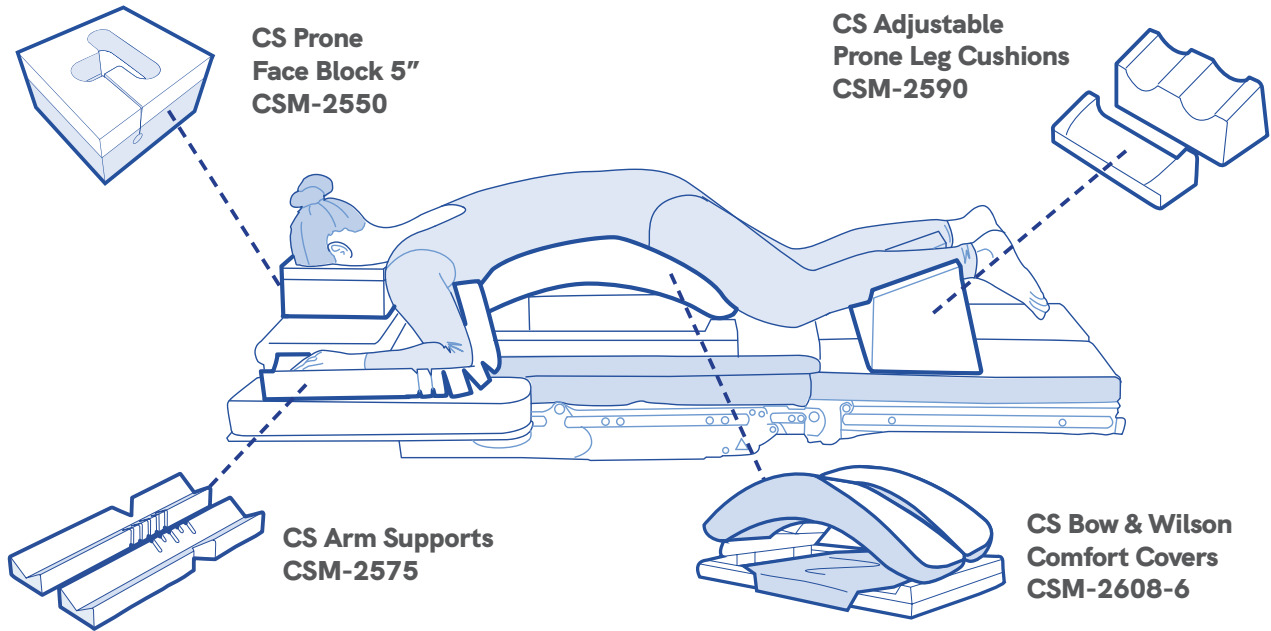
EC REP

Australian Sponsor, Summit Surgical
PO Box 60, Landsborough
QLD 4550 Australia

LOT Number:

Product Code: CSM-2570 Rev 03 06/21

Compatible Products



To see the full range of Care Surgical Products, visit www.care-surgical.com



Manufacturer

UK: Care Surgical Ltd
Unit 6 Ringtail Road
Burscough, L40 8JY
Tel: 01704 336671

USA: Care Surgical LLC
Marlborough
MA 01752
Tel: 866-243-4107

www.care-surgical.com

Care Surgical Supplies Limited, 69 Esker Woods Drive
Lucan, Co Dublin, K78PX45, Ireland



Do not reuse



CE Mark



Latex Free



Non Sterile



5 060624 120176



Australian Sponsor, Summit Surgical
PO Box 60, Landsborough
QLD 4550 Australia

Product Code: CSM-2570 Rev 03 06/21

GTIN

- + 5060624120176

Description

- + Disposable Drapes

Intended use

- + Protective covers

Indications for Use

- + Single Use
- + For use on the Wilson or Bow Frame
- + Helps to protect the Wilson or Bow Frame from wear and tear
- + Aids infection control

Kit consists of:

- + Sleeves to cover the frame's bars
- + Square drape to cover the frame's base
- + Bar roll to cover the frame's central bar
- + Latex and phthalate free
- + Instructions for use are packaged with the product

Warnings, Precautions, Contraindications & Adverse Effects

- + If incorrectly applied to the Frame, this product can cause pressure marks or ulcers on the patient

Packaging

- + Each set is packaged in a recyclable polyethene bag
- + 5 units are packaged into a cardboard box for sale

Transport & Storage

- + Transport and store in dry conditions and out of direct light where possible
- + Exposure to light may cause yellowing of areas of the product. This is purely cosmetic and will not affect the quality or the safety of the product