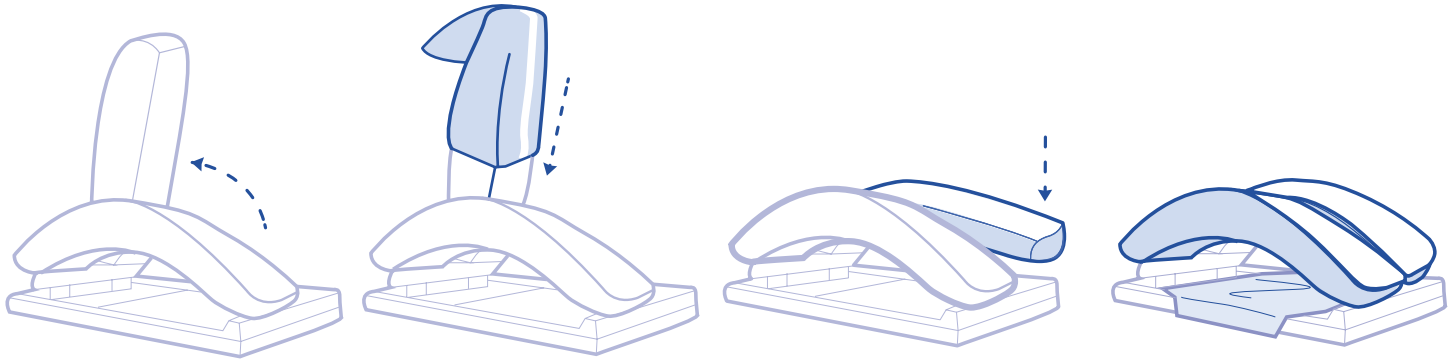




# CARE SURGICAL

# CS Bow & Wilson Standard Covers

Covers to protect the Wilson or Allen Bow® Frame from damage and to aid infection control



**1** Raise the arch of the Frame and slide the cover onto it. Ensure the white band is on the underside of the arch so the patient does not come in contact with the seam.

**2** Return the arch to its position and repeat with the other arch.

**3** Use the square drape to protect the base of the frame. Slide the bar roll onto the centre bar of the frame if applicable.

Consult the instructions for the Wilson Frame for guidance on correct positioning of the patient.



Manufacturer

UK: Care Surgical Ltd  
Unit 6 Ringtail Road  
Burscough, L40 8JY  
Tel: 01704 336671

USA: Care Surgical LLC  
Marlborough  
MA 01752  
Tel: 866-243-4107

[www.care-surgical.com](http://www.care-surgical.com)

Care Surgical Supplies Limited, Office 2, 12a Lower Main Street,  
Lucan Co. Dublin, K78 X5P8 Ireland



Medical Device



UK Conformity Assessed



Do not reuse



CE Mark



Latex Free



Non Sterile



5 060624 120176

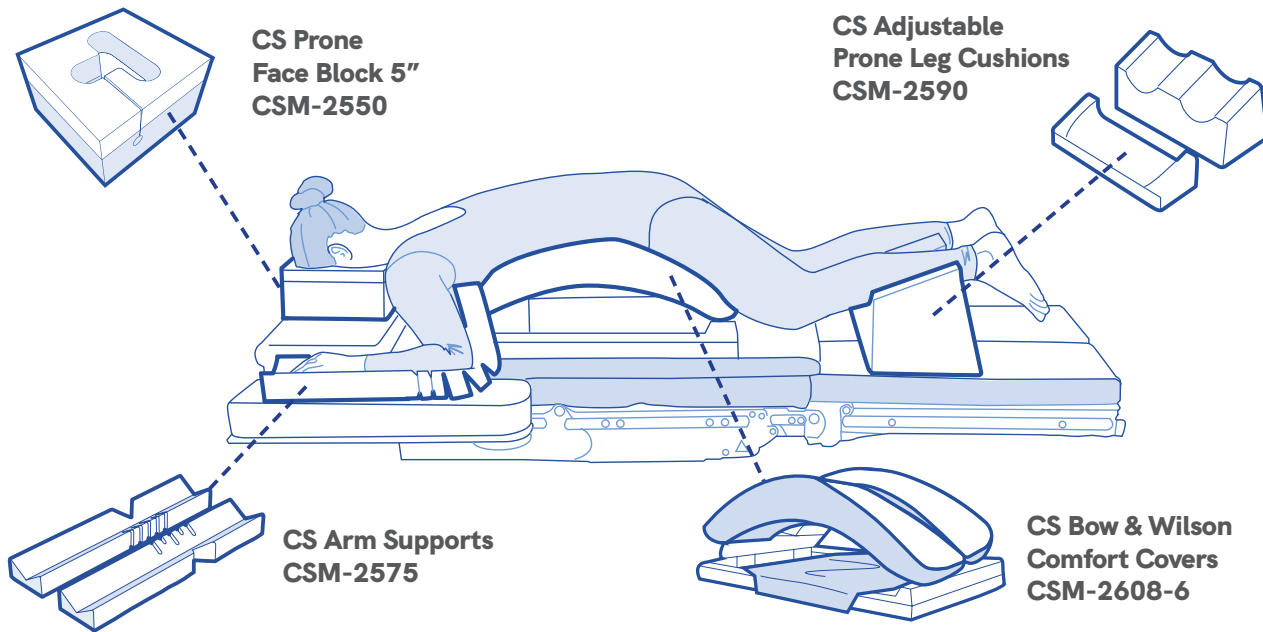


Australian Sponsor, Summit Surgical  
PO Box 60, Landsborough  
QLD 4550 Australia

LOT:

Product Code: CSM-2570 Rev.3 09/23

# Compatible Products



To see the full range of Care Surgical Products, visit [www.care-surgical.com](http://www.care-surgical.com)



Manufacturer

UK: Care Surgical Ltd  
Unit 6 Ringtail Road  
Burscough, L40 8JY  
Tel: 01704 336671

USA: Care Surgical LLC  
Marlborough  
MA 01752  
Tel: 866-243-4107

[www.care-surgical.com](http://www.care-surgical.com)

Care Surgical Supplies Limited, Office 2, 12a Lower Main Street,  
Lucan Co. Dublin, K78 X5P8 Ireland



Medical Device



UK Conformity  
Assessed



Do not reuse



CE Mark



Latex Free



Non Sterile



5 060624 120176



Australian Sponsor, Summit Surgical  
PO Box 60, Landsborough  
QLD 4550 Australia

ProductCode: CSM-2570 Rev.3 09/23