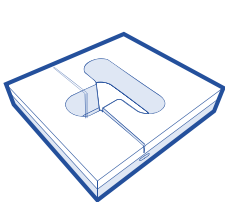




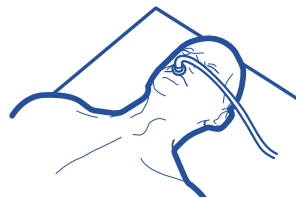
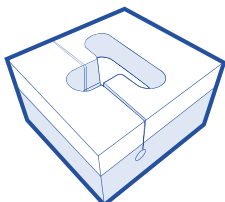
# CARE SURGICAL

## CS Prone Face Block 5" - Left & Right Intubation Slot, (compression packed)

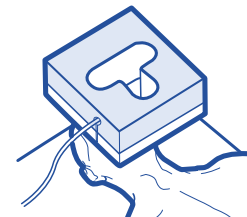
The Prone Block offers support to your patient's forehead and cheeks. Ensure the eyebrows are visible to avoid direct pressure to the eyes.



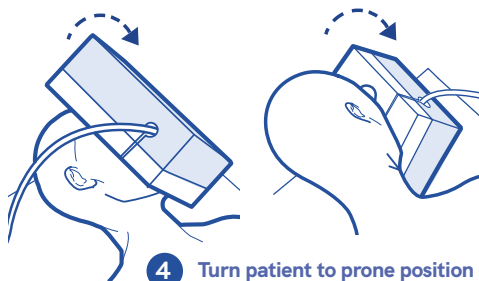
**1** Remove from bag 1 hour before start of procedure



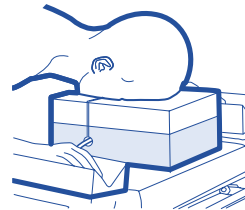
**2** With patient supine, place cushion on their face\*



**3** Feed the tubing up the slot & through the hole



**4** Turn patient to prone position



**5** Once turned Ensure neutral neck line

\*See overleaf for guidance on correct positioning



Manufacturer

UK: Care Surgical Ltd  
Unit 6 Ringtail Road  
Burscough, L40 8JY  
Tel: 01704 336671

USA: Care Surgical LLC  
Marlborough  
MA 01752  
Tel: 866-243-4107

[www.care-surgical.com](http://www.care-surgical.com)

Care Surgical Supplies Limited, 69 Esker Woods Drive  
Lucan, Co Dublin, K78PX45, Ireland



Do not reuse



CE Mark



Latex Free



Non Sterile



5 060624 120107

EC REP

Australian Sponsor, Summit Surgical  
PO Box 60, Landsborough  
QLD 4550 Australia

LOT Number:



Product Code: CSM-2551V Rev 02/06/21

# The Forehead & Cheeks

## Possible problems

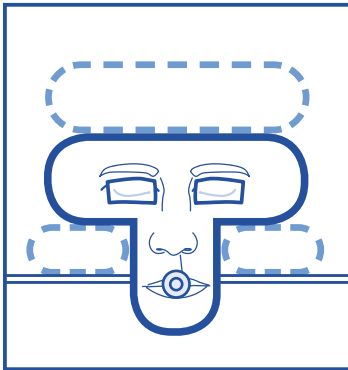
- + Pressure ulcers
- + Facial edema

## Possible causes

- + Inadequate blood supply due to prolonged excessive pressure
- + Shear, affecting the blood flow to the forehead or cheeks
- + Friction injury due to a period of continuous movement
- + Patient incorrectly positioned in the face support
- + High risk patient (includes the elderly, diabetics, smokers and those taking certain medications, eg steroids)

## Reduce the risk

- + Ensure the patient's face is supported on the bony part of their cheeks, not the soft tissue
- + Ensure the patient's eyebrows are clearly visible
- + The face support must not encroach into the periorbital area above or below the eye
- + Recheck the head support after turning the patient and at least every 30 minutes throughout the procedure
- + It may be necessary to lift and replace the patient's face during long procedures or if there has been movement



Manufacturer

UK: Care Surgical Ltd  
Unit 6 Ringtail Road  
Burscough, L40 8JY  
Tel: 01704 336671

USA: Care Surgical LLC  
Marlborough  
MA 01752  
Tel: 866-243-4107

[www.care-surgical.com](http://www.care-surgical.com)

Care Surgical Supplies Limited, 69 Esker Woods Drive  
Lucan, Co Dublin, K78PX45, Ireland

EC REP



Do not reuse



CE Mark



Latex Free



Non Sterile



Australian Sponsor, Summit Surgical  
PO Box 60, Landsborough  
QLD 4550 Australia

Product Code: CSM-2551V Rev 02 06/21

## GTIN

- + 5060624120107

## Description

- + Prone Face Cushion - Made from a layer of memory foam & polyurethane foam with a gap on each side for the ET Tube  
Compression packed

## Intended use

- + Supports patients' faces in the prone position

## Indications for Use

- + Single use
- + Stand alone/ all-in-one product
- + Firm base provides stability
- + Memory foam top for patient comfort and protection
- + Distributes the pressure on the patient's cheeks, forehead and chin while in the prone position
- + Reduces the incidence of pressure ulcers and marking
- + Raises the patient's head to assist with achieving a neutral neckline
- + Holes in both sides of the block for choice in where to place tubing
- + For patients aged 8 and over, dependent on stature
- + For patient's weighing up to 200kg
- + Latex and phthalate free
- + Instructions for use are packaged with the product

## Warnings, Precautions, Contraindications & Adverse Effects

- + There is a 1/11,000 risk of permanent visual loss associated with prone positioning, irrespective of the head support used
- + Incorrect positioning of the patient in this product can increase the risk of:
  - + POVL
  - + Pressure ulcers
  - + Neurological damage
  - + Venous pressure, which can lead to ischaemia
- + Do not use if this product is torn or damaged

## Packaging

- + Each Unit is packaged in a recyclable polyethene bag
- + 14 units are packaged into a cardboard box for sale

## Transport & Storage

- + Transport and store in dry conditions and out of direct light where possible
- + Exposure to light may cause yellowing of areas of the product. This is purely cosmetic and will not affect the quality or the safety of the product