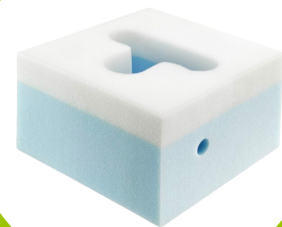




**CARE SURGICAL**  
Specialists in Patient Positioning

## CS Prone Face Block 7" - Left & Right Intubation Slot (compression packed)

The CS Prone Face Blocks are made from layers of soft memory foam, providing comfort, support and stability for patients in the prone position.



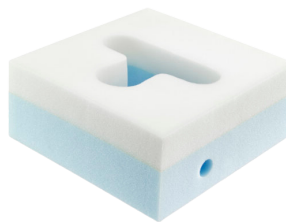
**CS Prone Face Block 7" -  
Left & Right Intubation  
Slot (compression packed)**

Code: CSM-2536V

Qty: 10

### CS Face Blocks:

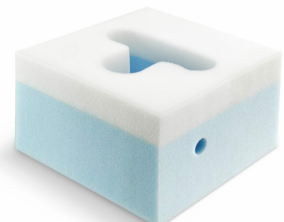
- + Firm base provides stability
- + Soft memory foam provides comfort and protection for the patient
- + Slot to secure the tubing clear of the patient's face



**CS Prone Face Block 7" -  
Right Intubation Slot  
(compression packed)**

Code: CSM-2535V

Qty: 10



**CS Prone Face Block 5" -  
Right Intubation Slot  
(compression packed)**

Code: CSM-2550V

Qty: 14

## Contact us for more information:

[www.care-surgical.com](http://www.care-surgical.com) | [info@care-surgical.com](mailto:info@care-surgical.com)

